



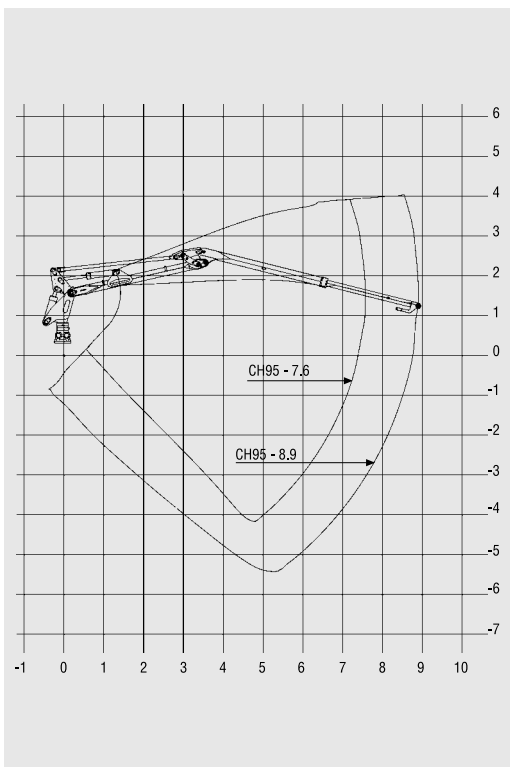
# WARATAH

# CH95

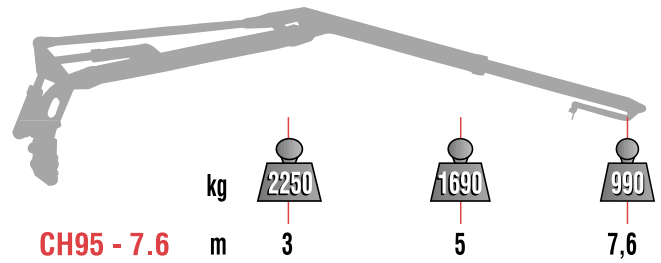
## HARVESTER CRANE



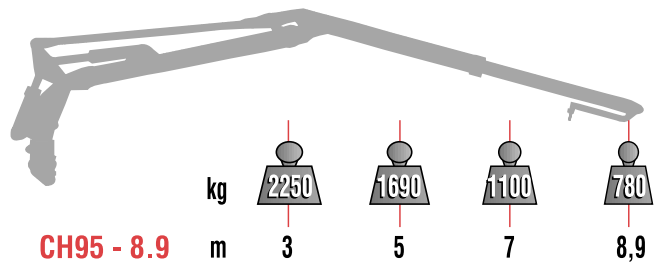
### OUTREACH DIAGRAM:



### CAPACITY DIAGRAM (allowed loads):



Actual lifting capacity depends on which link, rotator and harvester head is used.

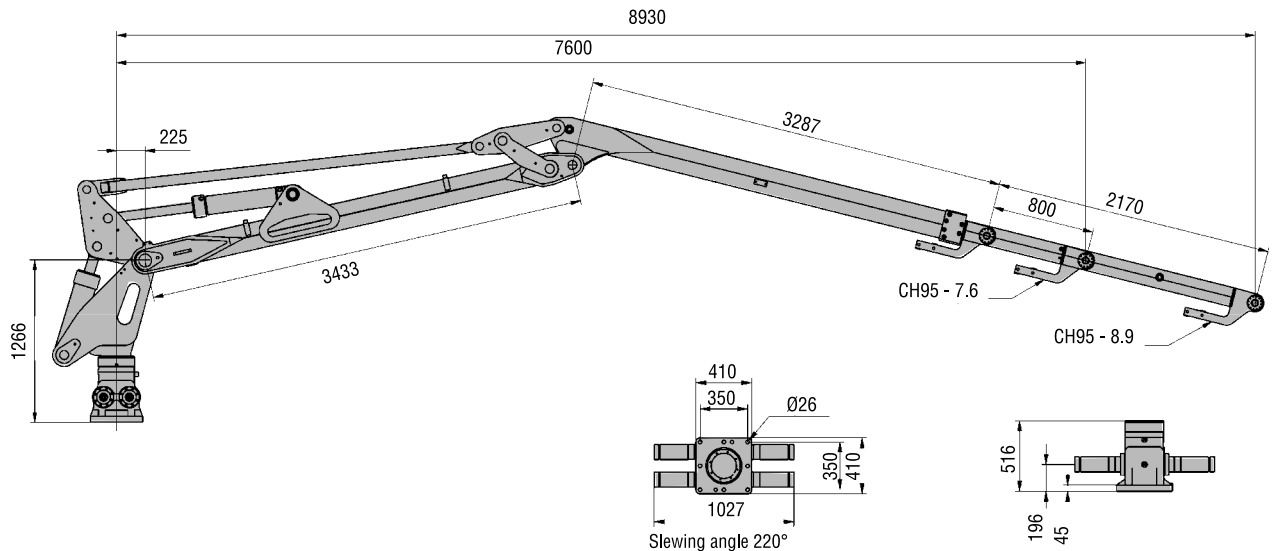


### TECHNICAL DATA:

		CH95 - 7.6	CH95 - 8.9
Lifting moment, gross	kNm	95	95
Max. load	kg	990	780
Outreach *)	mm	7900	9230
Stroke of boom extension	mm	800	2170
Slewing torque, gross	kNm	24,4	24,4
Slewing angle	°	220	220
Weight without oil, incl. hoses for harvester head	kg	1600	1650
Pump recommendation			
Max. working pressure	MPa	21,5	21,5
Oil flow	l/min	120	120
Power input	kW	43	43

\*) Outreach is with the Waratah harvester head.  
Actual length of the crane is 300 mm shorter.

### MAIN DIMENSIONS:



8/06

We reserve the right to amend these specifications at any time without notice. The only warranty provided by Waratah Forestry Attachments is its written Limited Warranty, which accompanies and applies to each product sold by Waratah Forestry Attachments. Waratah disclaims responsibility or liability for any economic loss or personal injury that may occur as a result of any changes to a Waratah product that have not been approved by Waratah

as a result of the non-approved inclusion on any Waratah product of any equipment not of Waratah's design or manufacture. Not all products are available in all markets. The manufacturer reserves the right to make changes or add improvements at any time without incurring any obligation to make such changes on machines manufactured previously.